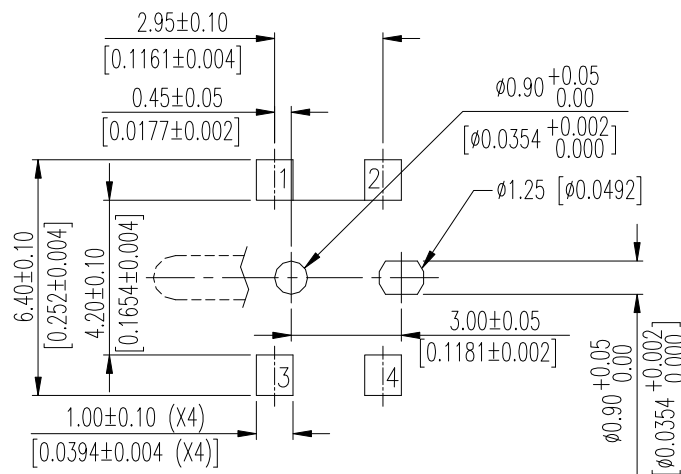
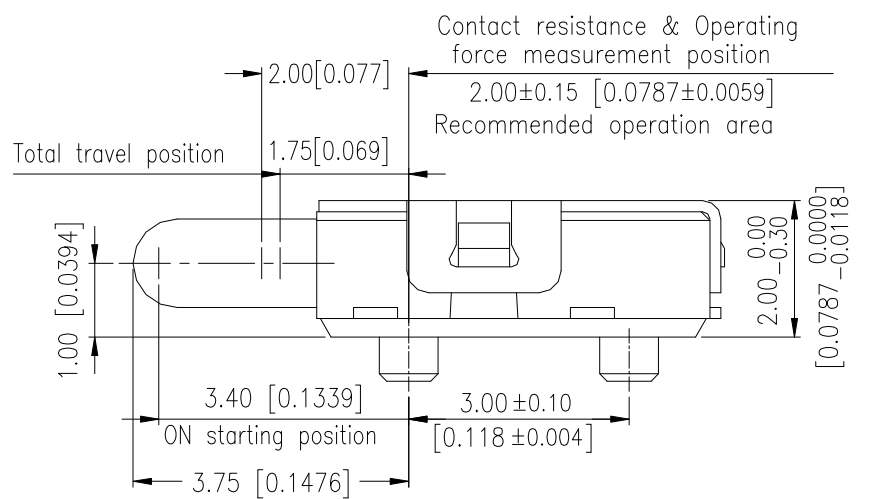
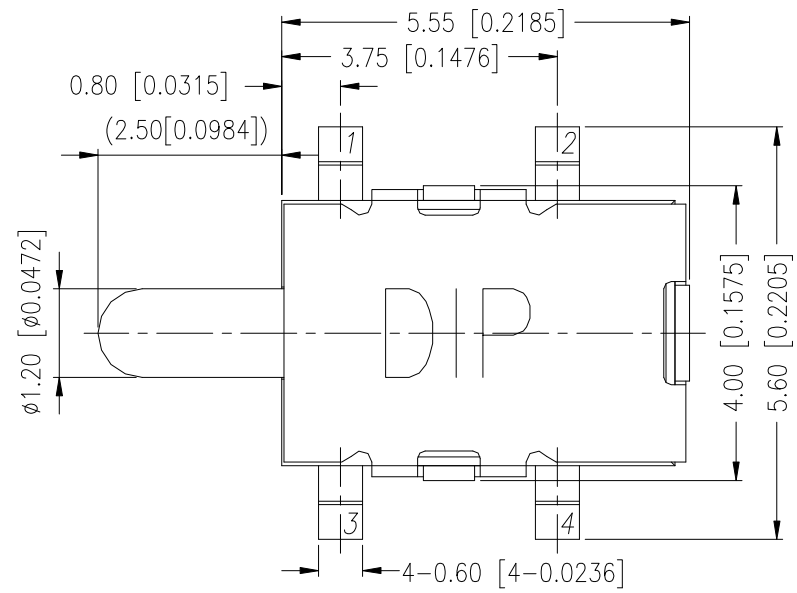
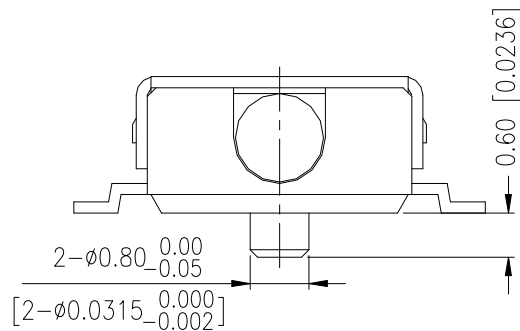
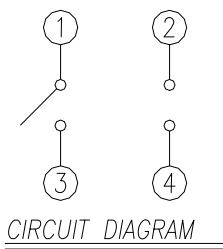


DIMENSIONS

FTE-1C

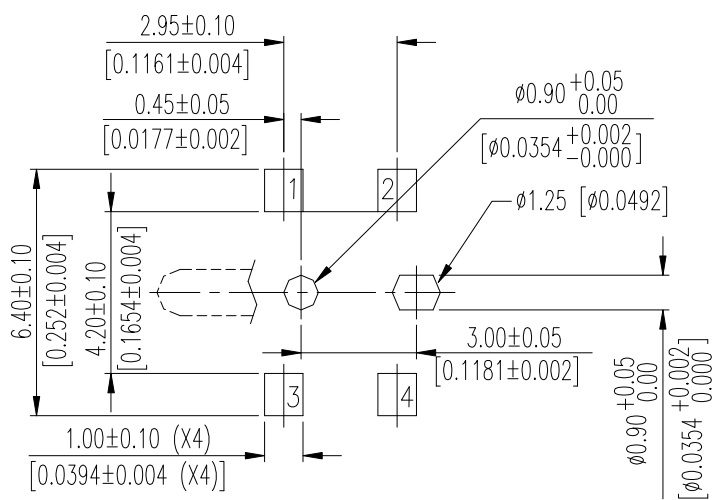


P.C.B. LAYOUT

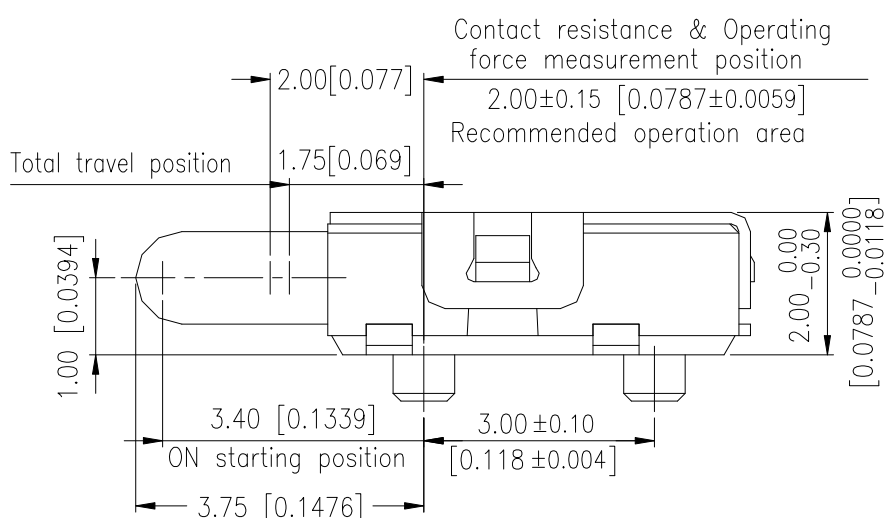
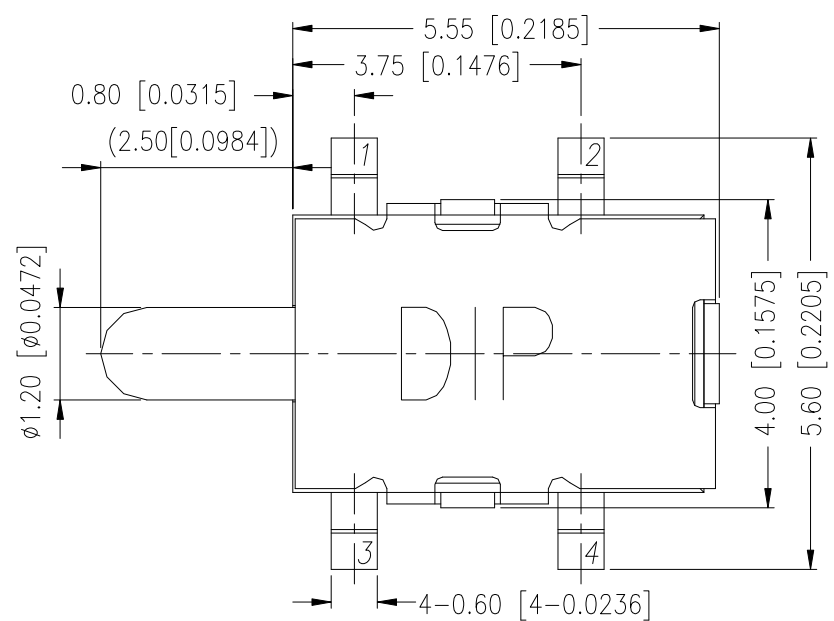
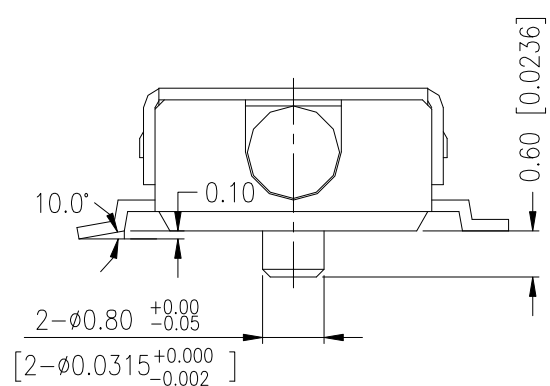
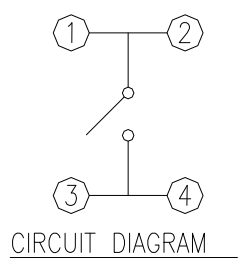


General Tolerance : ± 0.20 .

FTE-2C

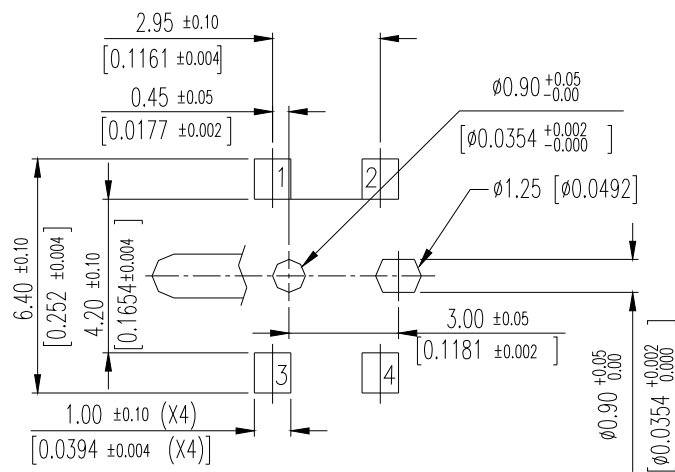


P.C.B. LAYOUT

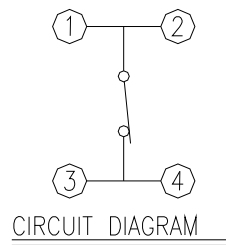


General Tolerance : ± 0.20 .

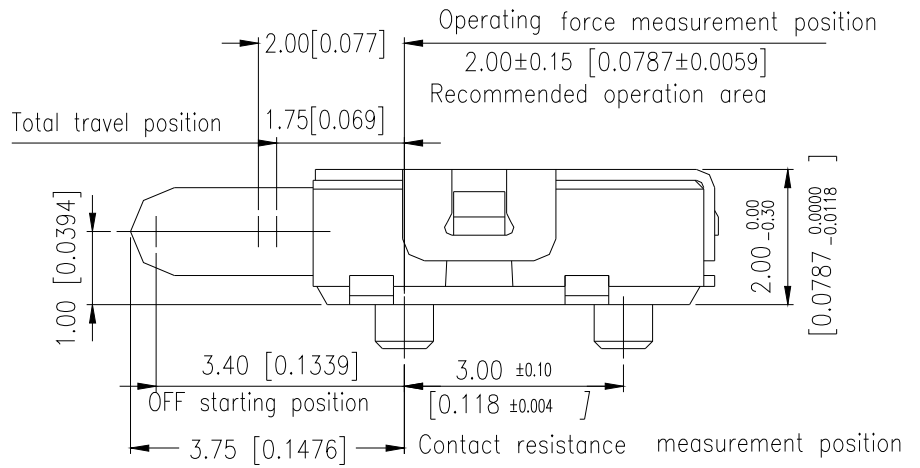
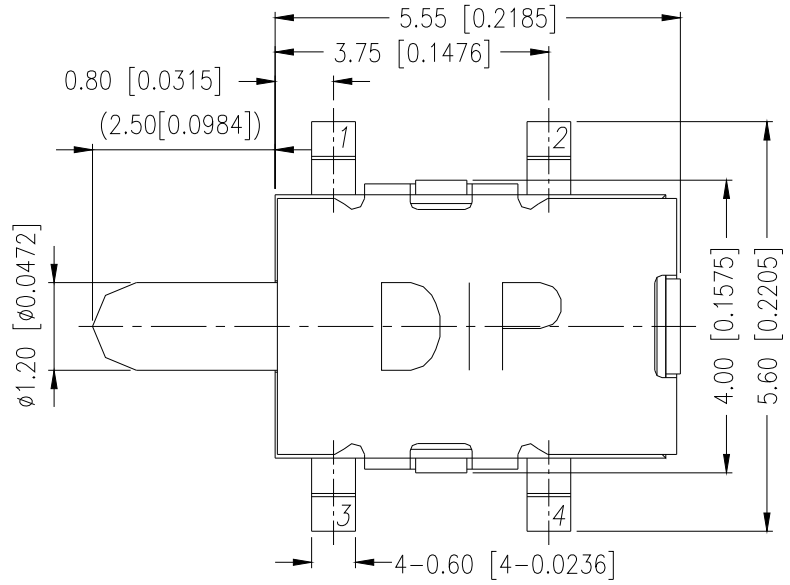
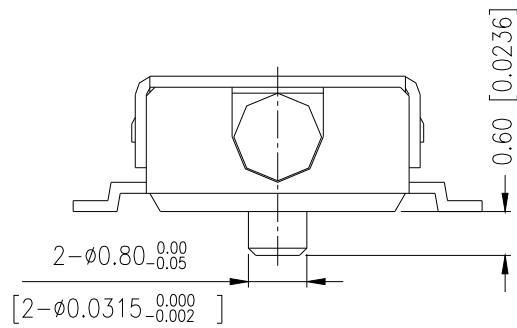
FTE-3C



P.C.B LAYOUT



CIRCUIT DIAGRAM



General Tolerance : ±0.20.

HOW TO ORDER

FTE - □ □ □ - □ - □

Package :
T/R = Tape & Reel

V = RoHS & Lead Free Solderable

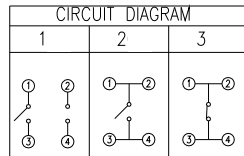
Q=Halogen Free

□= Silver Plating

A = Gold Plating

C = With Post

□=Without Post



Detector Switch

SPECIFICATION

△MECHANICAL

Operation Force: 150gf max.

Operation Temperature Range: -10°C to +60°C.

Storage Temperature Range: -20°C to +70°C.

△ELECTRICAL

Electrical Life: 100,000 cycles

Rating: 1mA,5VDC

Contact Resistance: 1Ω max

Insulation Resistance: 100MΩ min

Dielectric Strength: 100VAC / 1 minute

MATERIAL

△COVER: Stainless Steel

△BASE: UL94V-0 High-Temp Thermoplastic.

Color: Black

△STEM: UL94V-0 High-Temp Thermoplastic.

Color: Black

△CONTACT: Stainless with silver plated
Stainless with Au plated

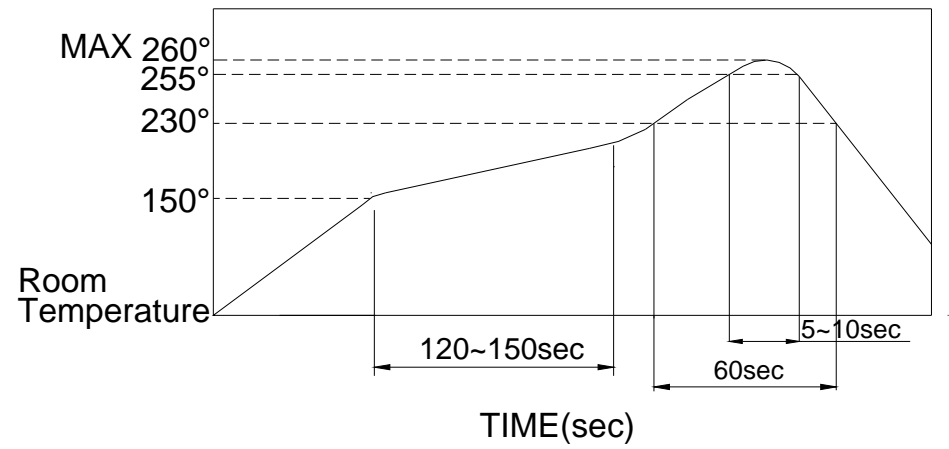
△TERMINAL : Brass with silver plated
Brass with Au plated

△SPRING : Piano Wire.

SOLDERING PROCESS

- △ **HAND SOLDERING:** Use a soldering iron of 30 watts, controlled at 350°C approximately max 5 seconds while applying.
- △ **REFLOW SOLDERING:** When applying reflow soldering, the peak temperature or the reflow Oven should be set at 260°C max.
- △ **Reflow Temperature Profile:**

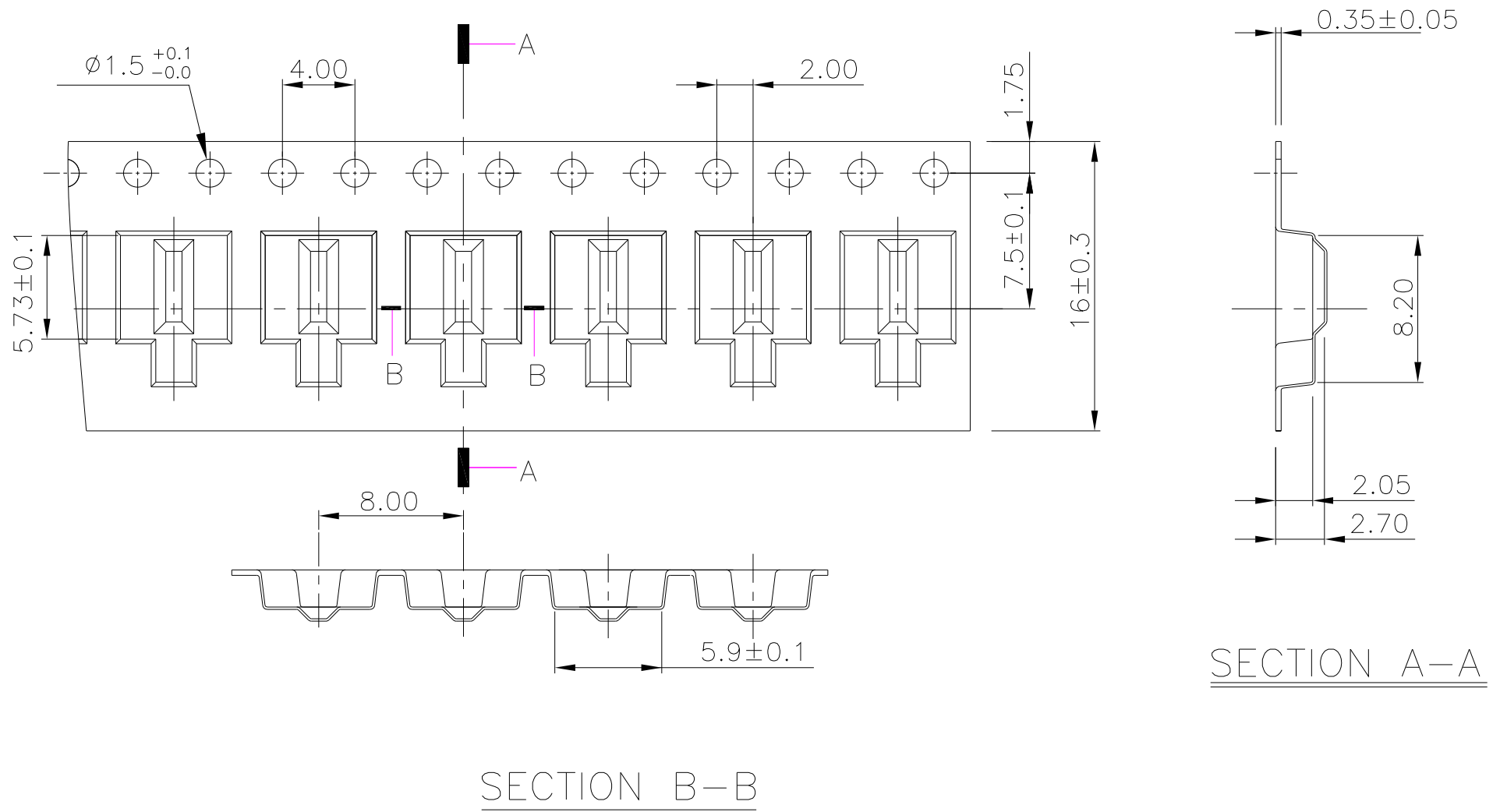
△ Temperature Profile :



PACKING

| Part Number | Number Per TUBEI | Number Per Reel |
|-------------|------------------|-----------------|
| FTE | - | 3000 |

REEL



General Tolerance : ±0.10.